



**FOR THE
HARMONY OF
THE BODY**

AND THE
PLEASURE
TO SEDUCE

OUR PRODUCTS
FOR A *nutational*
infrasonic liposculpture

Euromi 

TABLE OF

01 *n.i.l.* TECHNIQUE

- *nutational infrasonic liposculpture*
- Experience sharing.....

02 *n.l.f. System*[®]

- *n.l.f. System*[®] 1 & 2

03 *eva* PRODUCTS RANGE

- *evamatic*[®] 5
- *evasp*[®] 1
- *evasp*[®] 2
- *evasp*[®] 6
- *evasp*[®] 7

04 CANNULAS

- Infiltration cannulas
- Aspiration cannulas *evamatic*[®]
- Aspiration cannulas (Manual or lipofilling)
- Lipofilling cannulas
- Accessories.....

CONTENTS

PAGE **04**

..... p. 05

..... p. 06

PAGE **08**

..... p. 09

PAGE **10**

..... p. 11

..... p. 12

..... p. 13

..... p. 14

..... p. 15

PAGE **16**

..... p. 16

..... p. 17

..... p. 18

..... p. 18

..... p. 19



01

n.i.l. TECHNIQUE

The *nutational infrasonic liposculpture (n.i.l.)*

This technique, developed by Euromi, provides the practitioner with a comfortable, effective and precise tool, which is **unique in the world**. Liposuction is led to a real **liposculpture of the body**

The *nutational infrasonic liposculpture* is a variant of vibrolipo aspiration. The principle is based on 2 points: **the nutational movement and infrasound**.

- ✓ **Nutation** is a precessional movement that can be observed in a **helical or oscillatory movement**. The hand piece (*evamatic*[®]) has a pneumatic motor that guides the end of the cannula in a nutational movement.

This specific movement is used for uniform **infiltration and aspiration**.

Nutation creates an emulsion that gently **breaks the fat cells apart while preserving all tissues**. After this step, the emulsified fat can be gently aspirated, with fewer bleeding, oedema and ecchymosis. Aspiration is thus very selective. *

- ✓ **Infrasound** (low frequency: less than 25 Hz) is generated by the movements of the cannula and acts as an anaesthetic on the treated part, making the treatment more comfortable during and after the procedure.

Unlike other techniques, the effects of the infrasound are transmitted beyond the cannula. Infiltration is thus faster and more uniform. *

Nutational infrasonic liposculpture allows the following forms of liposuction: abdominoplasty, gynecomastia, fibrous areas, superficial liposuction, micro liposuction, breast reduction, sweat glands, body lifting, etc..

EVAsp[®] and *evamatic*[®] are a **real evolution for the patient as well as for the surgeon**. Over the last 25 years, the *n.i.l.* technique has become **the reference technique in LIPOSCULPTURE**.

With numerous studies all over the world (Europe, USA, Asia,...) and without having ever been contradicted, this technique has already convinced thousands of professionals.

This technique can be used on men as well as on women aged 18 and over, for any type of skin/fat (Caucasian, Asian, African, etc.) and also for patients who have already been treated (2nd liposuction).

* Heymans O.; Castus P.; Grandjean F.X.; Van Zele D. Liposuction : review of the techniques, innovations and applications_2006; Acta Chirurgica Belgica 106(6), pp. 647-653.

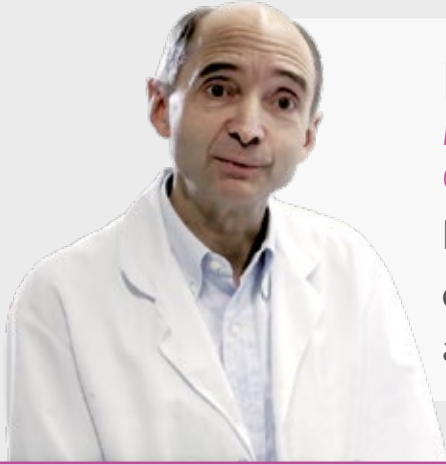
Otteni, F. The Lipomatic : Comparative Study of the Vibrolipoaspiration and the conventional lipoaspiration_2001; La Revue de chirurgie esthétique de langue française, 25(103), pp. 9-16.

Rebelo, A. Vibroliposuction : Liposuction / Liposculpture Assisted by Compressed Air_2003; International Journal of Cosmetic Surgery & Aesthetic Dermatology, 5(1), pp. 77-82.

Rebelo, A. Power-Assisted Lipoplasty. Dans Shiffman M. A., Di Giuseppe A. (eds.)_2006; Liposuction : Principles and Practice (pp. 286-289). Springer Berlin Heidelberg.



Professor Beguin is sharing



PR. BEGUIN

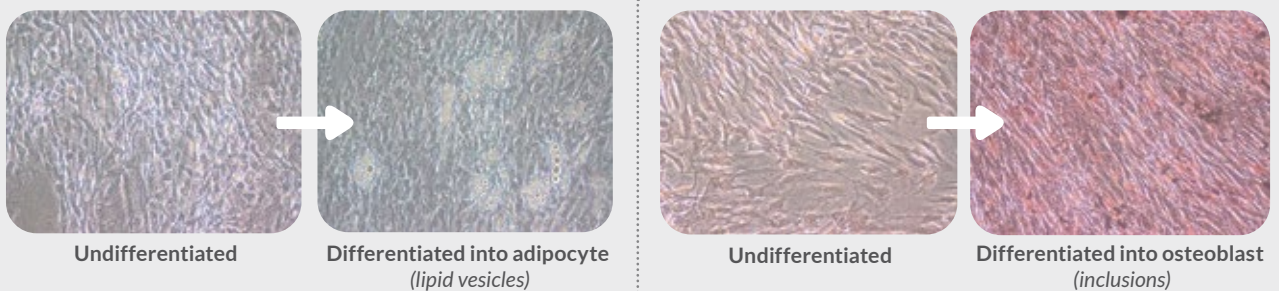
Haematology Professor at the University of Liege and Chief of Haematology Department at the CHU in Liege.

His laboratory examined the stem cells collected with the lipofilling *n.l.f. System*[®] and the *EVAmatic*[®]

The study focused on the viability, the phenotype and the differentiation of the mesenchymal stem cells at the adipose tissue level harvested with the *EVAmatic*[®], and on the **autologous transplant of the adipose tissue** with the lipofilling *n.l.f. System*[®].

The study, conducted by Chantal Lechanteur (R&D Manager of the laboratory), concerns the mesenchymal stem cells (MSC) coming from the adipose tissue harvested with the *EVAmatic*[®] and stored in the *n.l.f. System*[®] 1 kit.

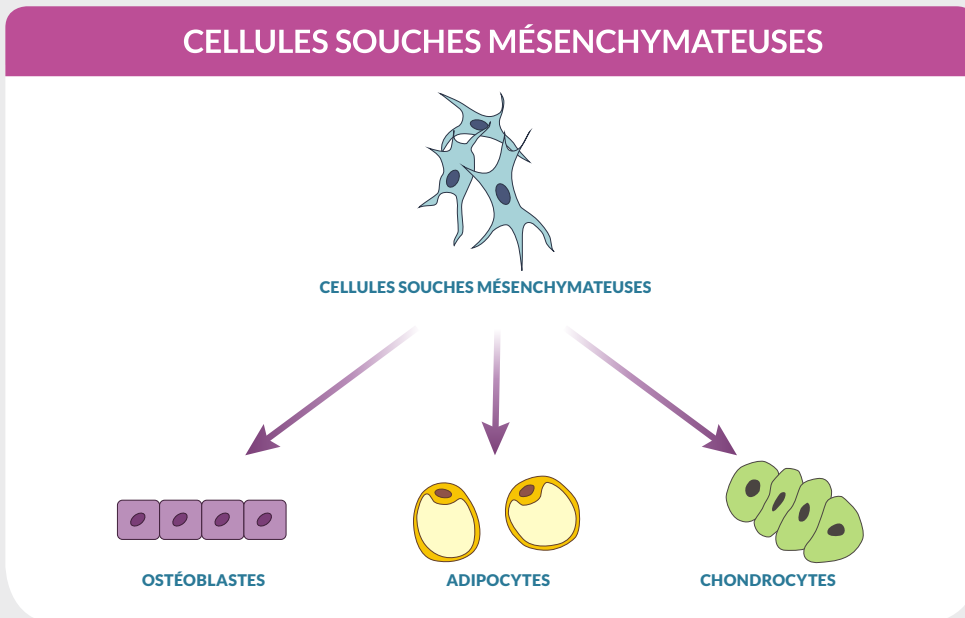
The samples were sent to the gene and cell therapy service of the CHU-Liege. The stem cells derived from the adipose tissue were first isolated and then cultured so they can be cultivated and expanded via successive trypsinizations until fourth passage.



Microscopic pictures of the differentiated and undifferentiated stem cells

When collecting at fourth passage, the cells were characterized by their membrane marker profile by flow cytometry and by their capacity for osseous, cartilaginous and adipose differentiation.

his own experience...



All the expanded populations have the phenotype related to the mesenchymal stem cells (MSC) which is characterized by a positivity (> 95%) of the CD90, CD105 and CD73 markers and a negativity (<1%) of the CD3, CD14, CD45, HLADR and CD34 markers.

The obtained MSC were then differentiated into adipocytes and into osteoblasts by cultivating them for 3 weeks in a specific environment.

The *evamatic*[®] preserves the stem cells of the harvested adipose tissue and to successfully obtain MSC from all tested fractions.

Summary of Chantal Lechanteur's article
LTCG, Haematology Clinic Prof. Y. Beguin, CHU of Liege



02

n.l.f. System®

(nutational lipofilling system)

1 & 2

n.l.f. System[®] 1 & 2

Ref. 1118NLF1 (n.l.f. 1)

Ref. 1118NLF2 (n.l.f. 2)

- ✔ Completely closed and sterile circuit
- ✔ Biocompatible
- ✔ Single-use
- ✔ Compatible with the *evasp*[®] range, or the manual handle for manual harvesting
- ✔ **The only medical device specialized in lipofilling system authorized with *evAmatic*[®]**
- ✔ Easy to use (reduced manipulations)
- ✔ In compliance with the European standards - CE marking



Discover this system with our movie



FILTER FOR nlf 2 KIT



The n.l.f. System[®] 1 kit includes:

1 specific single use diameter 3mm length 25cm 9 holes Viterbo sampling cannula. This cannula is constituted of 2 parts to be assembled (1 part directly in contact with the patient + 1 part that goes through the *evAmatic*[®] or through the black handle)

- 1 sterile canister : **Fat collection capacity : 1,5 L**
- 1 sampling tubing
- 1 sampling fat tubing with clamp
- 1 aspiration tubing

The n.l.f. System[®] 2 kit includes :

1 specific single use diameter 3mm length 25cm 9 holes Viterbo sampling cannula. This cannula is constituted of 2 parts to be assembled (1 part directly in contact with the patient + 1 part that goes through the *evAmatic*[®] or through the black handle)

- 1 sterile canister : **Fat collection capacity : 0,8 L with a special micron filter**
- 1 sampling tubing
- 1 sampling fat tubing with clamp
- 1 aspiration tubing

SUPPORT IN STAINLESS STEEL SOLD SEPARATELY AND RESTERILISABLE

02

eva
**PRODUCTS
RANGE**

evamatic® 5

Ref. 1101EKL5

- ✓ New generation of *evamatic*® handpiece
- ✓ The cannula holder is directly integrated into the handpiece, the device thus offers a better elongation
- ✓ Better nutation for excellent emulsion results
- ✓ In compliance with the European standards - CE marking



Characteristics

Active security system (stopping when in contact with non-fatty tissues)

- No thermal release

- Micro-pumping system allowing an acceleration of the fat removal without increasing suction

- Nutation movement

- Infrasonic frequency (lower than 25 Hz)

ADVANTAGES FOR THE PATIENT

Less traumat
(fewer hematomas and major reduction of ecchymosis and oedemas)

- Less painful

- Excellent skin retraction

- Shorter post-operative recovery



ADVANTAGES FOR THE SURGEON

Easier and less tiring work, which means a more precise and gentle gesture

- Better access to difficult and delicate areas (back, fibrous zones, ...)

- Treatment of delicate zones (knees, calves, buttocks...) with high precision

- Shorter operative time

evasp[®] 1

Ref. 1114SP1 (220V)
Ref. 1114SP1110V (110V)

evasp[®] 1 system is the basic system of the evasp[®] range. It regulates the compressed air supplied to the evamatic[®] and allows the nutational infrasonic liposculpture.

Thanks to its provided infiltration cannula and the use of an external pressure system (peristaltic pump), the infiltration is uniform and rapid.

The **evasp[®] 1** is designed for practitioners already using their own infiltration and aspiration system.



- ✓ Compatible with lipofilling *n.l.f. System[®] 1 & 2*
- ✓ In compliance with the European standards - CE marking

evasp[®] 1 includes:

evamatic[®]

-

evasp[®] 1 control box

-

Complete set of cannulas

-

Accessories



ADVANTAGES

Preservation of non-fatty tissues

-

Shorter operative time and post-operative recovery

-

Easier and more precise work

-

Better access to difficult and delicate areas

-

Less traumat (fewer hematomas and major reduction of ecchymosis and oedemas) and less painful for the patient

-

Easily transportable

evasp[®] 2

Ref. 1114SP216 (220V)
Ref. 1114SP216110V (110V)

This system allows a nutational infrasonic liposculpture with aspiration. It is manufactured for a safe liposculpture respecting the non-fatty tissues.

Thanks to its provided infiltration cannula and the use of an external pressure system (peristaltic pump), the infiltration is uniform and rapid.

→ The *evasp[®] 2* is the *evasp[®] 1* combined with an aspiration system. The *evasp[®] 2* is designed for practitioners already using their own infiltration system.

- ✓ Compatible with lipofilling *n.l.f. System[®] 1 & 2*
- ✓ In compliance with the European standards - CE marking

evasp[®] 2 includes:

evamatic[®]

- *evasp[®] 2* control box

- High-speed aspirator

- Complete set of cannulas

- Accessories



ADVANTAGES

Preservation of non-fatty tissues

- Shorter operative time and post-operative recovery

- Easier and more precise work

- Better access to difficult and delicate areas

- Less traumat (fewer hematomas and major reduction of ecchymosis and oedemas) and less painful for the patient

evasp[®] 6

Ref. 1114SP616 (220V)
Ref. 1114SP616110V (110V)

This system allows not only a quantitative nutational infrasonic infiltration, but also a nutational infrasonic liposculpture.

Manufactured for a safe liposculpture respecting the non-fatty tissues.
The system is entirely digitalized.

- ✓ Preservation of non-fatty tissues
- ✓ Shorter operative time and post-operative recovery
- ✓ Easier and more precise work
- ✓ Better access to difficult and delicate areas (back, fibrous zones...)
- ✓ Less traumat (fewer hematomas and major reduction of ecchymosis and oedemas) and less painful for the patient
- ✓ Constant, deep, homogeneous and controlled infiltration, whatever the type of fat.
- ✓ Infrasonic frequency (<25 Hz) comfortable for the patient
- ✓ Compatible with lipofilling *n.l.f. System*[®] 1 & 2
- ✓ In compliance with the European standards - CE marking

evasp[®] 6 includes:

evamatic[®]

- Digitalized control box
- Quantitative infiltration system
- High-speed aspirator
- Complete set of cannulas
- Accessories

The evasp[®] 6 is a complete system:

The quantitative infiltration system allows control of the total volume infiltrated.

The *n.i.l.* technique ensures a uniform infiltration with a constant pressure, whatever the fat density.



evasp[®] 7

Ref. 1114SP7 (220V)
Ref. 1114SP7110V (110V)

This system allows not only a quantitative nutational infrasonic infiltration, but also a nutational infrasonic liposculpture.

Manufactured for a safe liposculpture respecting the non-fatty tissues.
The system is entirely digitalized.

- ✓ Preservation of non-fatty tissues
- ✓ Very easy to change zones thanks to the mapping of the different zones on the touch screen
- ✓ Shorter post-procedure recovery
- ✓ Less traumat (fewer hematomas and major reduction of ecchymosis and oedemas) and less painful for the patient
- ✓ Infrasonic frequency (<25 Hz) comfortable for the patient
- ✓ Compatible with lipofilling *n.l.f. System[®] 1 & 2*
- ✓ In compliance with the European standards - CE marking

evasp[®] 7 includes:

evamatic[®]

- Control panel with touchscreen
- Precise quantitative infiltration system
- High-speed aspirator
- Complete set of cannulas
- Accessories

The evasp[®] 7 is a complete system :

- **15-inch touch screen** that can be angled from 0 to 45 degrees
 - > Excellent visibility for the surgeon during the procedure
 - > Control panel with touch screen allowing the infiltrated and aspirated zones to be visualized

- Control of the volume infiltrated ml per ml in the zone selected on the touch screen

- **The *n.i.l.* technique** ensures a uniform infiltration with a constant pressure, whatever the fat density

- Infiltration and aspiration data recording on USB flash memory



EVA PRODUCT RANGE

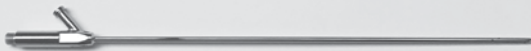


CANNULAS

To obtain the commercial references of each cannula, please refer to our price list.

Infiltration cannulas

EVAMATIC 5 cannula



LUER cannula



EVAMATIC cannula

DIAMETER (mm)	LENGTH (mm)	TYPE OF CANNULAS (only in stainless steel)
2 • 2,5 • 3	200 / 250 / 300 *	

LUER cannula, manual

DIAMETER (mm)	LENGTH (mm)	TYPE OF CANNULAS (only in stainless steel)
2 • 2,5 • 3	150 * / 200 / 250 / 300 *	

* except diameter 2



Aspiration cannulas

*eva*matic®

ASPIRATION *eva*matic®

(Available in stainless steel or tungsten)

STAINLESS STEEL cannula



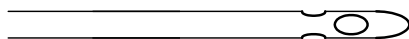
TUNGSTEN cannula



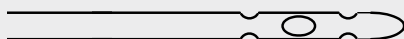
TYPE OF CANNULAS *eva*matic®

(Available in stainless steel or tungsten)

3G



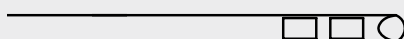
ILLOUZ



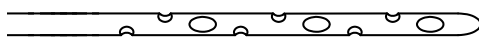
MERCEDES



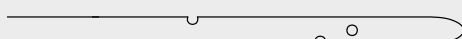
TOLEDO



VITERBO



HOUYOUX



(Only in stainless steel)

BRORSON



24 H



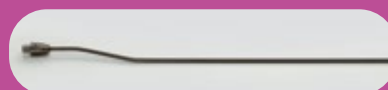
CANNULA	DIAMETER (mm)	LENGTH (mm)
3G	3 • 4 • 5	150* / 200 / 250 / 300 / 350
ILLOUZ	3 • 4 • 5	150* / 200 / 250 / 300 / 350
MERCEDES	3 • 4 • 5	150* / 200 / 250 / 300 / 350
TOLEDO	3 • 4 • 5	150* / 200 / 250 / 300 / 350
VITERBO	3,5 • 4,5 • 5	150* / 200 / 250 / 300 / 350
HOUYOUX	2,5	150 / 200 / 250 / 300
BRORSON	3 • 4	150 / 300
24H	3 • 4	250 / 300 / (350 - diameter 4 only)

* except for diameter 5



Each type of cannula can be ordered custom-made in «bayonet» model except for Houyoux, Brorson and 24H cannulas.

Diameter 3mm. Length 250mm
or Diameter 4mm. Length 300mm



For Viterbo cannulas :
Diameter 3,5 mm, Length 250 mm
ou Diameter 4,5 mm, Length 300 mm

Aspiration cannulas

Manual or lipofilling

MANUAL ASPIRATION

(Only available in stainless steel)

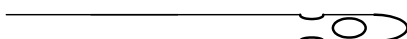
LUER cannula



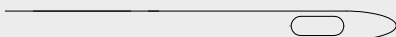
TYPE OF MANUAL CANNULAS

(Only available in stainless steel)

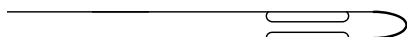
3G



1B



MERCEDES



VITERBO



CANNULA	DIAMETER (mm)	LENGTH (mm)
1B	2,0 • 2,5 • 3,0	100 / 150 / 200 / 250
3G	2,0 • 2,5 • 3,0	100 / 150 / 200 / 250
MERCEDES	2,5 • 3,0	100 / 150 / 200 / 250
VITERBO	3,0	100 / 150 / 200 / 250

Lipofilling cannulas

LIPOFILLING cannula



evamatic[®]
or black handle base

(Only in stainless steel)

CANNULA	DIAMETER (mm)	LENGTH (mm)	TYPE OF CANNULAS
INFILTRATION	2,5 • 3,0	150 / 200	
ASPIRATION	3,0	150 / 200	

Accessories of *evamatic*[®]



FOR THE HARMONY OF THE BODY

AND THE PLEASURE TO SEDUCE

This document is intended for health professionals and presents Medical Devices from class IIa.
Please read the user manual carefully.



Zoning Industriel des Plenneses
11 rue des Nouvelles Technologies - 4821 Andrimont (BELGIUM)
☎ : +32(0) 87 29 22 22 - 📠 : +32(0) 87 29 22 23
info@euromi.com - www.euromi.com

